



DM SERIES

NVR Tuya



Installation manual

How to install the system

How to network and connect cameras How to use live and playback

How to connect to common clients



Contents of the manual

The DM series NVRs are video recording systems for Onvif IP cameras that you want to manage with the Tuya home automation app.

To understand these NVRs you need to know that all our professional IP cameras work with the standard Onvif protocol, common to the majority of surveillance cameras, and yes They control it with our IoVedo.RK app. Our home automation devices, such as Wi-Fi cameras, home automation and video intercoms, instead use the Tuya home automation protocol, and the Smartlife app, the most The world's most popular home automation app, used by countless home automation devices.

Those who use the Tuya app for home automation usually love the possibility of managing the whole house in a single app capable of controlling remote control relays, intercoms, thermostats, etc.

With these DM NVRs you can include the IP cameras of your Onvif video surveillance system in the Tuya app. You can use these NVRs as the main NVR or in addition to an Onvif NVR, like our RK Series NVRs.

This manual explains how to install the video recorder, how to connect the cameras and how to use essential functions.



Prepare the cameras

Before installing an NVR, you must have the IP cameras you want to manage connected to the network. The NVR is able to handle all Onvif cameras and is able to detect their presence and take them in load.

DSE RK SERIES CAMERAS

Our RK Series professional IP cameras natively integrate the Onvif protocol and are Therefore, they are compatible with this NVR. Before installing the NVR, you must configure the network IP address. of each camera so that it is easily accessible from a computer with a browser. The cameras must be installed on the same network as the NVR, with the same network segment (e.g. 192.168.0...). See the camera documentation and tutorials for more information.

ONVIF CAMERAS from other manufacturers

Cameras from other manufacturers that support the onvif protocol must be installed on the network as our RK IP cameras seen above and are managed in the same way.

DSE DOMOTICAM DM SERIES CAMERAS

Our home automation cameras are WiFi cameras that connect to your WiFi network in just a few seconds. seconds, using the Tuya Smartlife app.

After connecting the cameras to your wifi you will need to enter the configuration of the camera via the Smartlife app and enable the Onvif protocol, assigning the password to use in ONVIF access (see the camera manual). Once the protocol is enabled Onvif in the camera you can proceed to add it to the NVR.

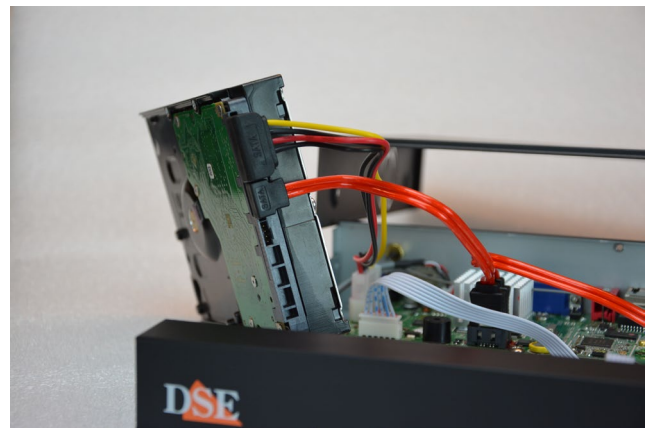
For these operations you must follow the camera manual.

Install the Hard Disk

If you want your system to be able to record, you need to install a hard disk inside the video recorder. Any 3.5" SATA computer hard disk will do, but for a larger duration it would be advisable to purchase a model specifically for video recording. The maximum hard disk capacity you can mount is 8 TB.



Remove the cover by unscrewing the side screws and rear

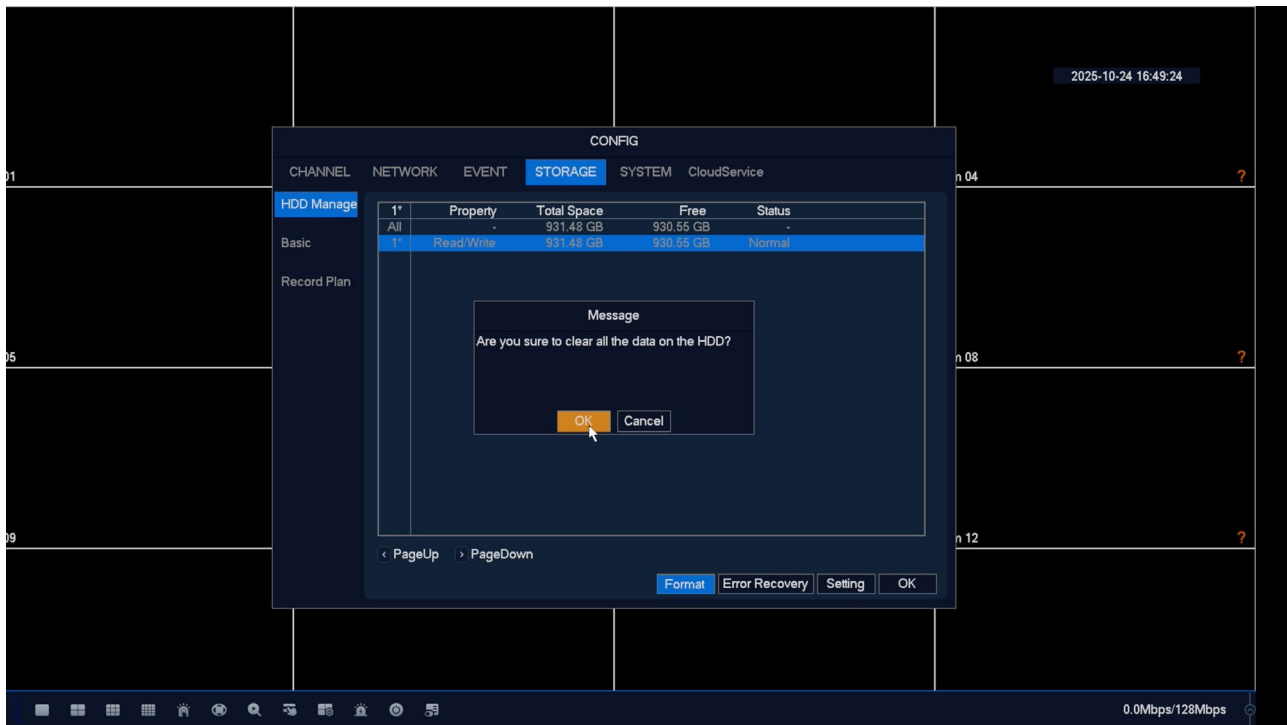


Connect the hard disk with the two cables power and data that you find inside. If there are multiple doors, choose any pair.



Secure the hard disk with the 4 screws provided. they screw from under the VCR

On the next startup, the NVR/DVR will detect the newly installed hard disk and ask you to start the formatting to be able to use it.



CAUTION – The power consumption of a hard disk varies greatly depending on its capacity. Our video recorders are supplied with a power supply suitable for a standard hard disk. 1 or 2TB, usually the most used size. If you install a larger hard disk it is better to replace the standard power supply with a more powerful one.

Connect an NVR

You purchased an NVR. Your video recorder can only manage IP network cameras.

These are the rear connections. The features vary depending on the model you purchased.



A-OUT-You can connect an external speaker to this minijack connector to broadcast audio. Remember that the HDMI monitor output also carries audio, so if you connect a TV via HDMI you can hear audio without connecting this output.

VGA-You can connect a computer monitor to this output. This output supports maximum resolution of 1920x1080 FullHD.

HD-This is the HDMI output for the monitor. Almost all TVs and PC monitors have this connection port. If you connect a TV, to see the images you must remember to select on your TV the external HDMI input you used for the NVR. This is usually done by pressing the SOURCE button on the remote control. These DVRs provide 1080P output resolution. Remember that the HDMI cable cannot be longer than a few meters. To connect a monitor to distance from the NVR you must use an HDMI transmission device.

NET-This is the RJ45 network port. To view your NVR over the Internet and manage cameras. IP, you need to connect the NVR to your network, such as your router, via this port. You need to use a normal straight-through network cable and insert it from one end into the network port on the NVR and on the other to a free port on your router or switch. The NVR is factory set to auto configure yourself on the network automatically (DHCP).

USB-To the USB ports you can connect the mouse included with the DVR and USB sticks for backup of video files.

DC 12V-Connect the included 12VDC power supply here



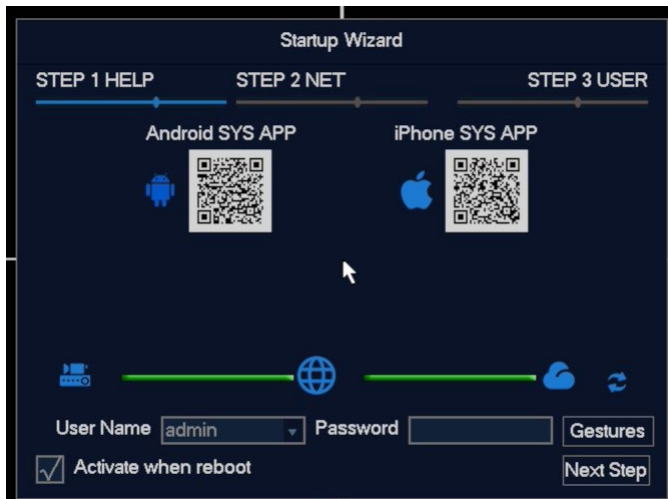
Do the first ignition

As soon as you connect the power plug, the DVR/NVR starts up and shows an image on the screen. DVRs and NVRs for video surveillance do not have a power switch because they are designed to always remain on. If you don't see the image you need to check the cable and monitor settings. The NVR's monitor output has a standard 1080P resolution. If your monitor has a particular resolution, it may not be compatible. When you first turn it on, **awizard** which helps you configure the options main features of your system in just a few minutes. All the options that are configured in the guided setup can also be accessed later in the setup menu. configuration.

Wizard

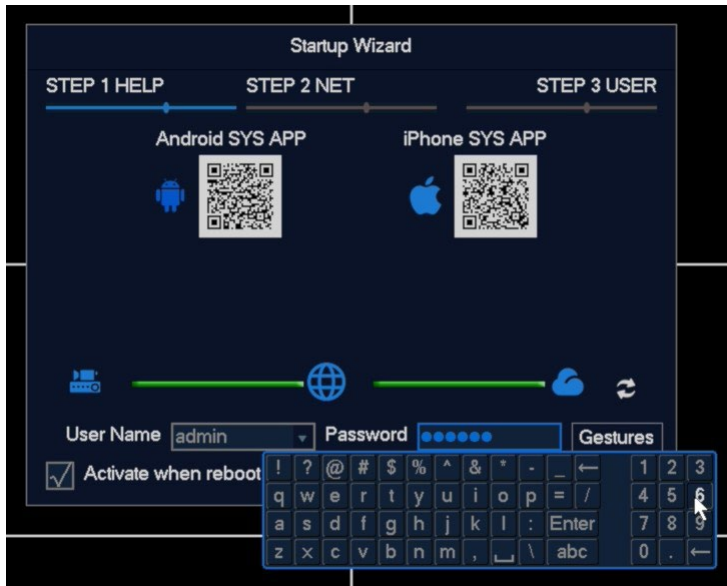
1 – SET THE PASSWORD

When you turn on the device, the setup wizard starts.



Above are the QR codes to download the Tuya Smartlife app. You can download it to your phone at so you can have it ready later.

Enter your preferred password for the admin user that will allow you to access the NVR. Choose a strong password and don't forget it. With the Gestures button you can also set a pattern to use instead of the password.



Press NEXT STEP for the next step.

2 – SET UP THE NETWORK

Here you can enter the NVR's network parameters. It is best to leave the DHCP checkbox selected by default.

This way the NVR automatically takes the network parameters from the router. Check the two

The green bars below represent the NVR's connection to the Internet and the cloud server. If the data

If your network connections are set up correctly, you will see the two green segments, as in the example below.



Press NEXT STEP for the next step.

3 – SET UP USERS

Here you can add other users with their password who can access the NVR

INSTALLATION MANUAL

DM SERIES – NVR Tuya



Page:9



FINISHED!

At the end of the wizard your CCTV system is already working. Later in the manual you will find other basic configurations.

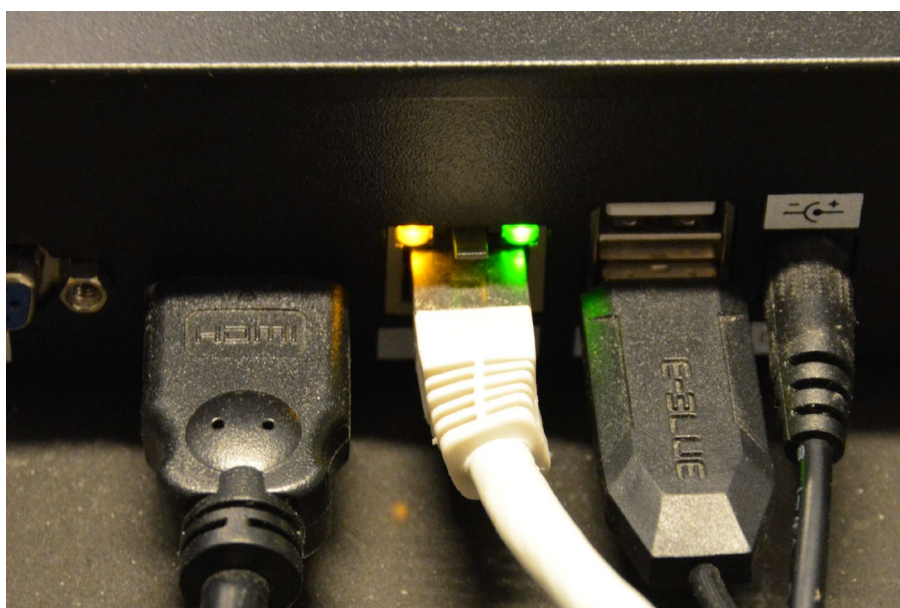
Connect the NVR to your network

To be able to connect to the surveillance system via PC or mobile phone or to manage

For IP cameras installed on the network, you need to connect the NVR to your network. To do this, use a cable.

network and connect **the external NETWORK port NET** to an available port on your router or switch.

Check that the port LEDs light up, this means that the hardware connection is correct.



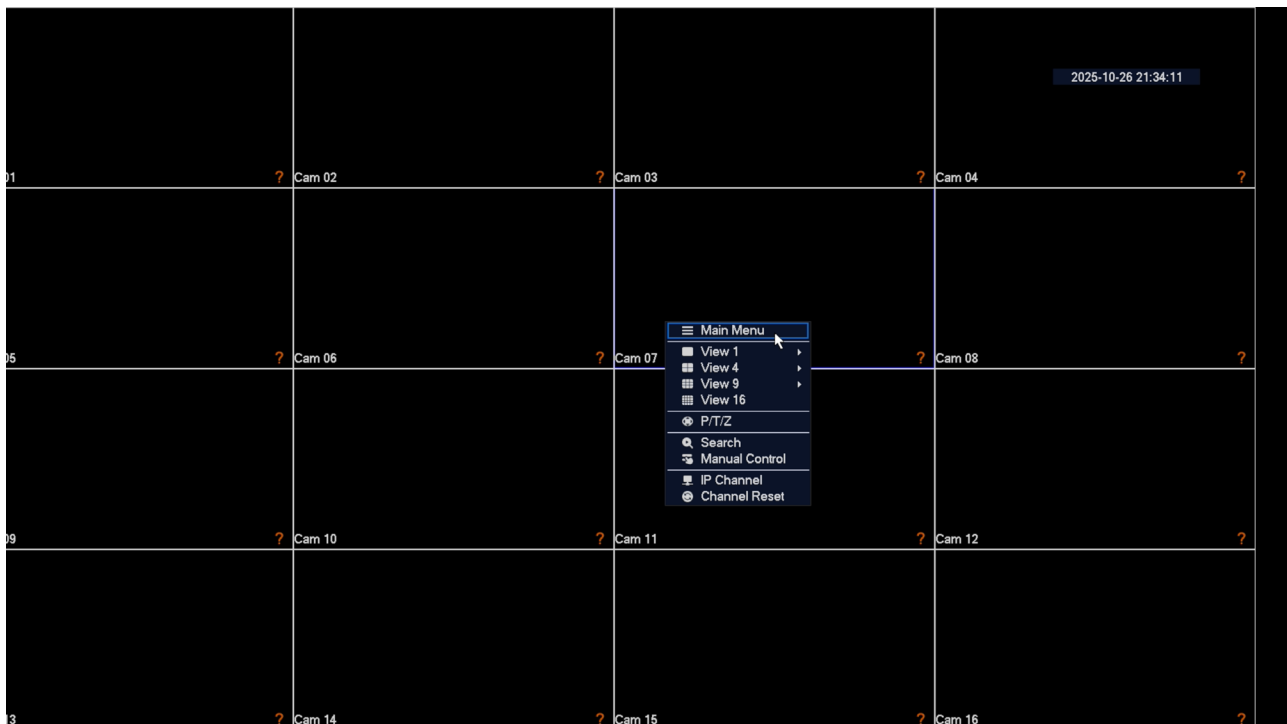


Access the NVR menu

Your NVR has a configuration menu. To access it, follow these instructions.

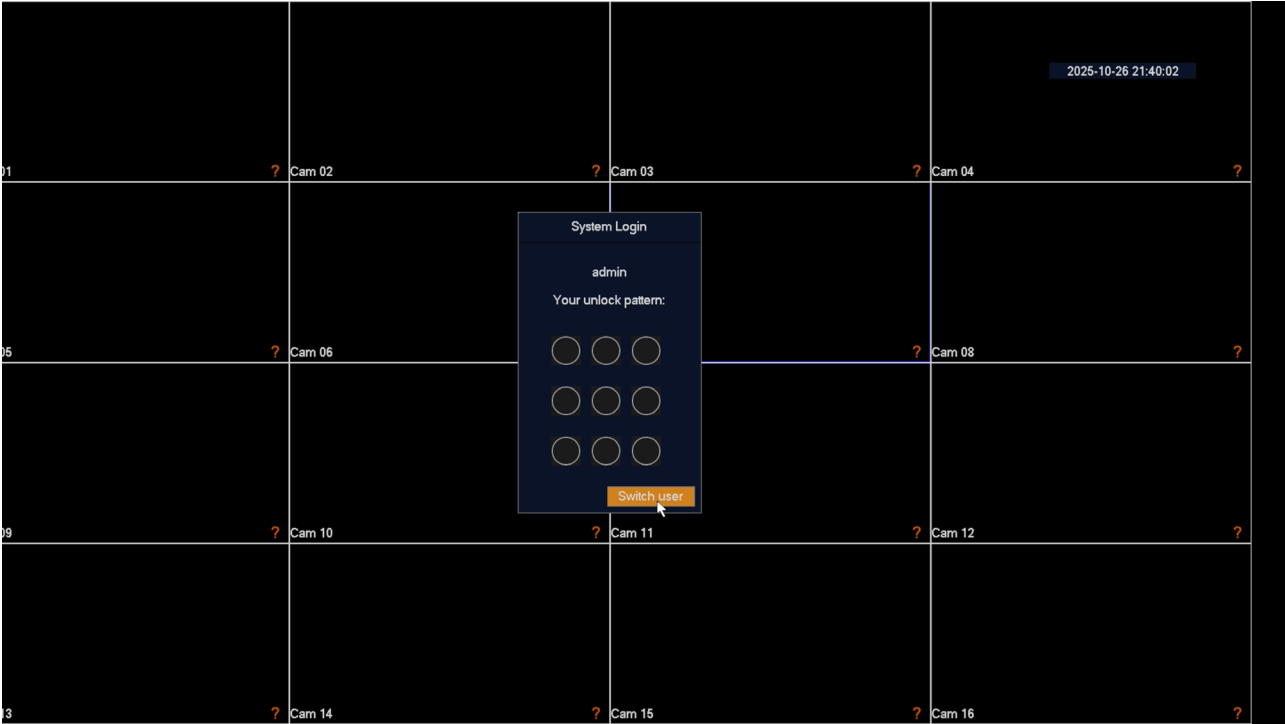
1 – RIGHT CLICK AND SELECT MAIN MENU

Right click on the screen and choose the first item in the drop-down menu



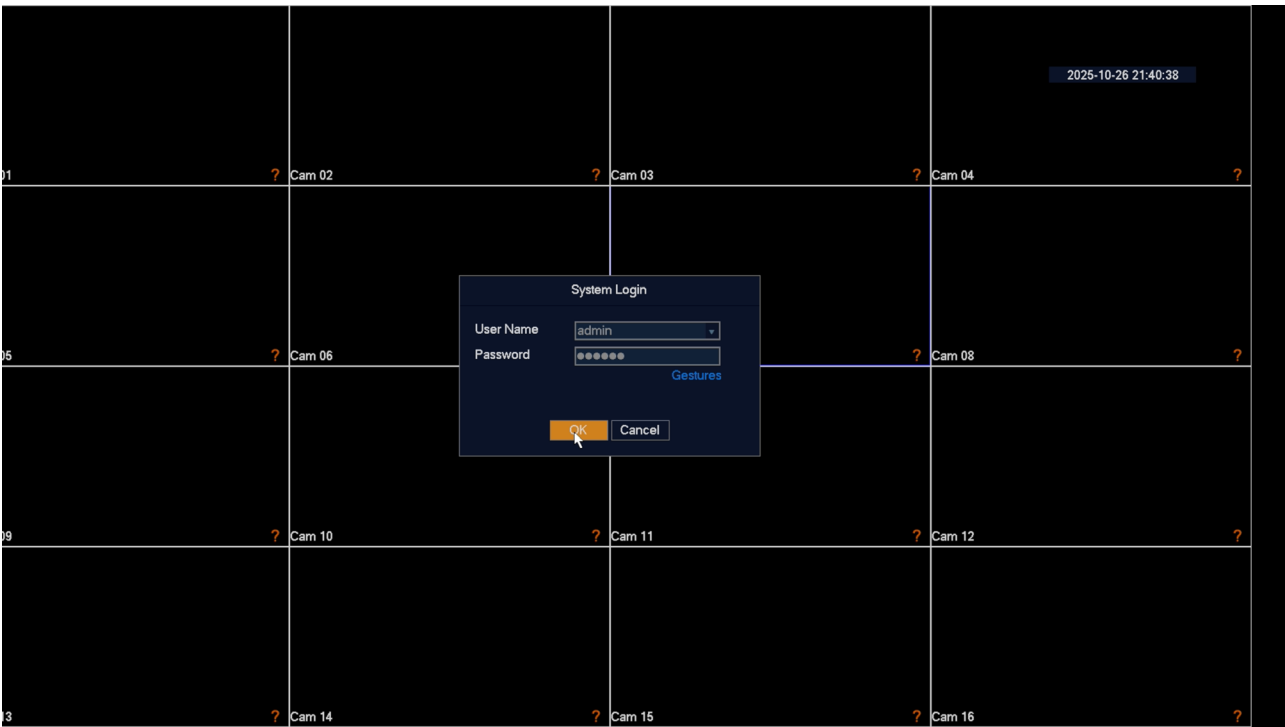
2 – LOG IN WITH THE SIGN

If you have set a login pattern on the first boot, draw it on the screen



3 – OR LOG IN WITH YOUR PASSWORD

If you have not set a login pattern at the first start or prefer to log in with the password
Click Switch User and enter the password





4 – DONE, YOU NOW HAVE ACCESS TO THE NVR SETTINGS





Check your NVR's network settings

Your NVR configures itself on the network automatically (DHCP), so it receives the IP address directly.

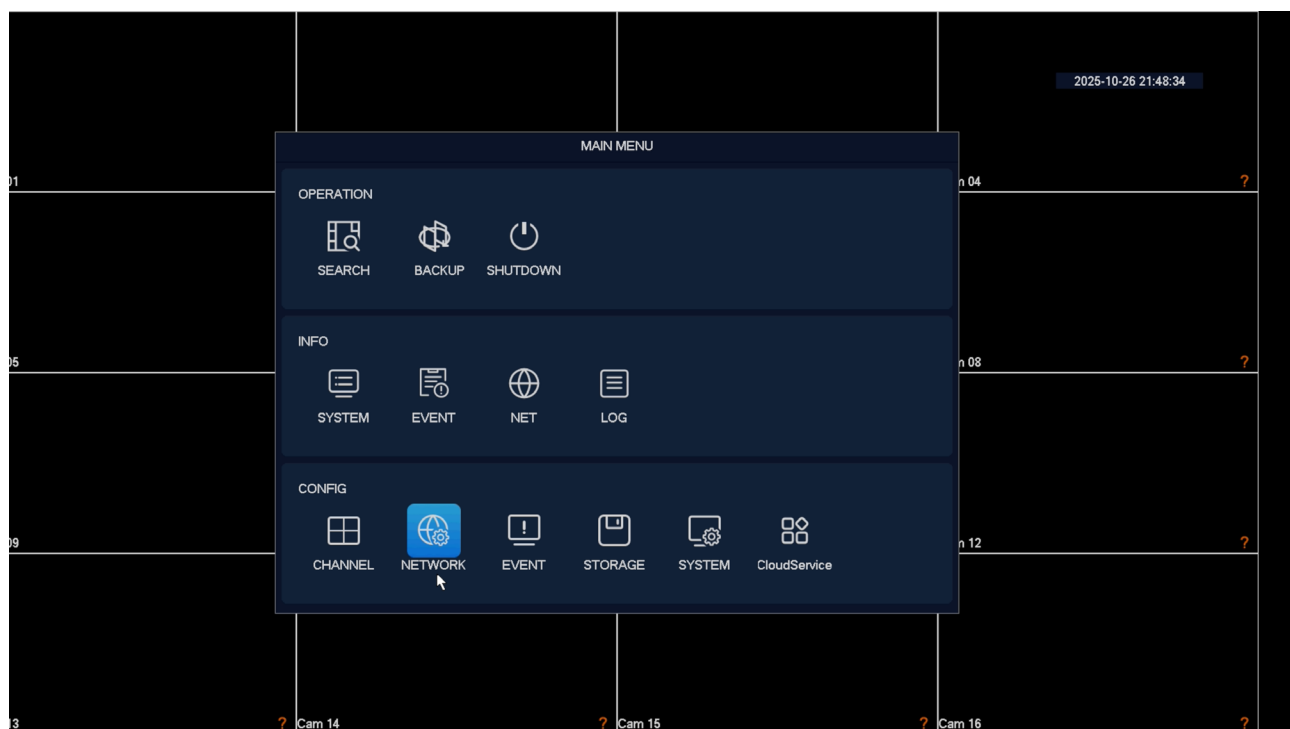
and network configuration from your router. You don't have to worry about entering any parameters.

However, before connecting remotely with PCs and mobile phones, it is a good idea to check the network situation.

To do this, follow these instructions

1 – OPEN THE NETWORK WINDOW TO CHECK THE IP ADDRESS

Click the NETWORK ICON and open network settings

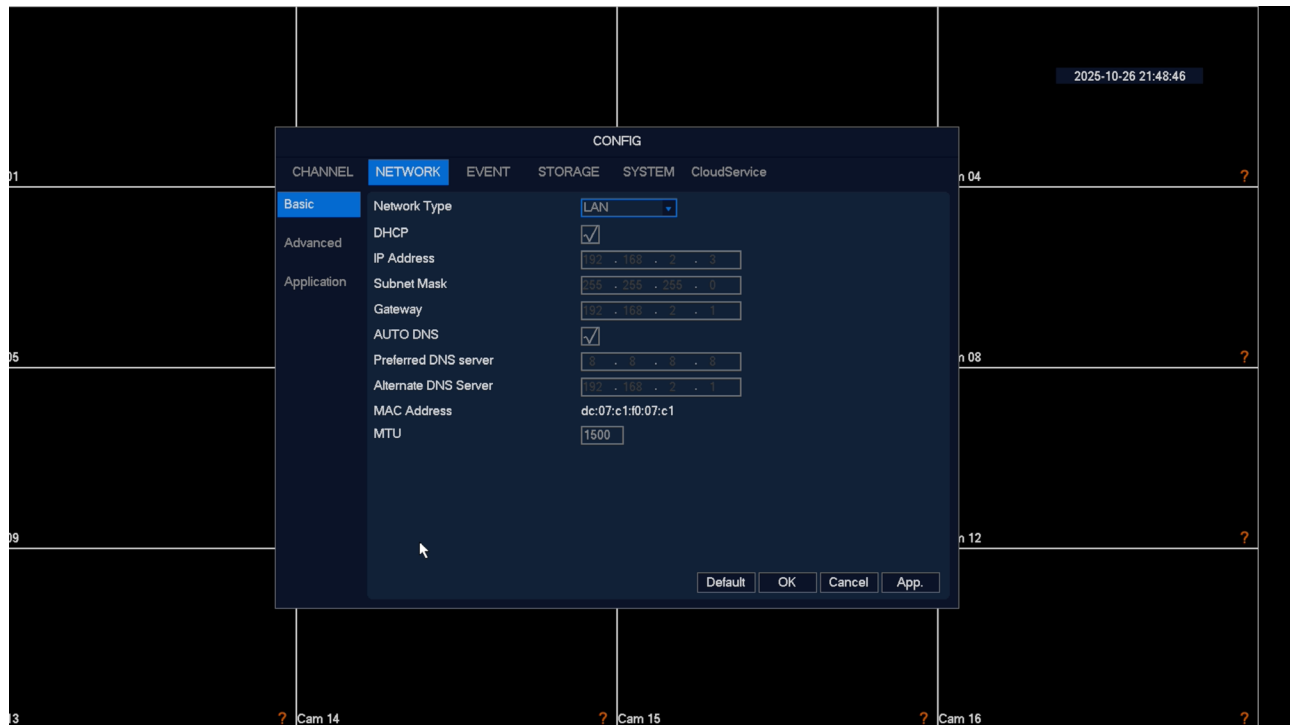


2 – DHCP CHECK

In this window, check that the DHCP checkbox is active and take note of the IP address that Your NVR has taken over the network (IP ADDRESS). This will be useful if you want to access to the NVR from within your network, without going through the Internet.

If your network is not connected to a router, or other device that acts as a DHCP server,

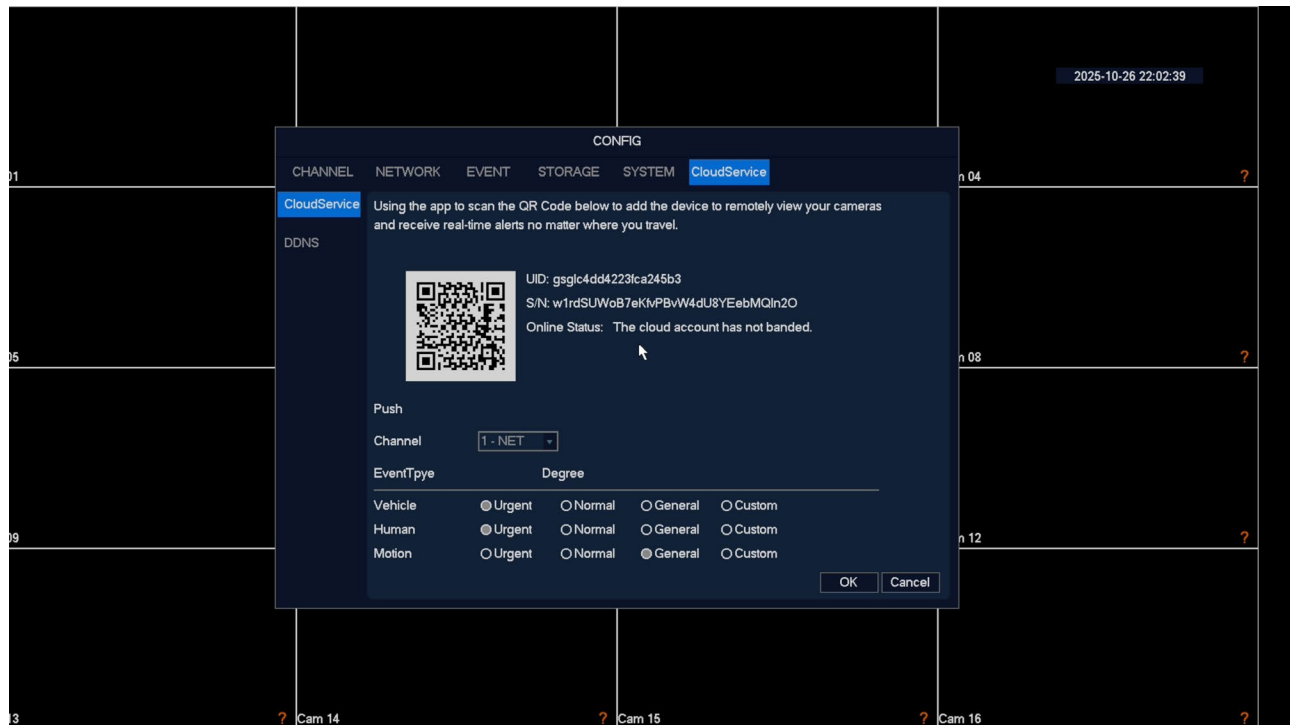
You cannot use the DHCP option and must set a manual address.



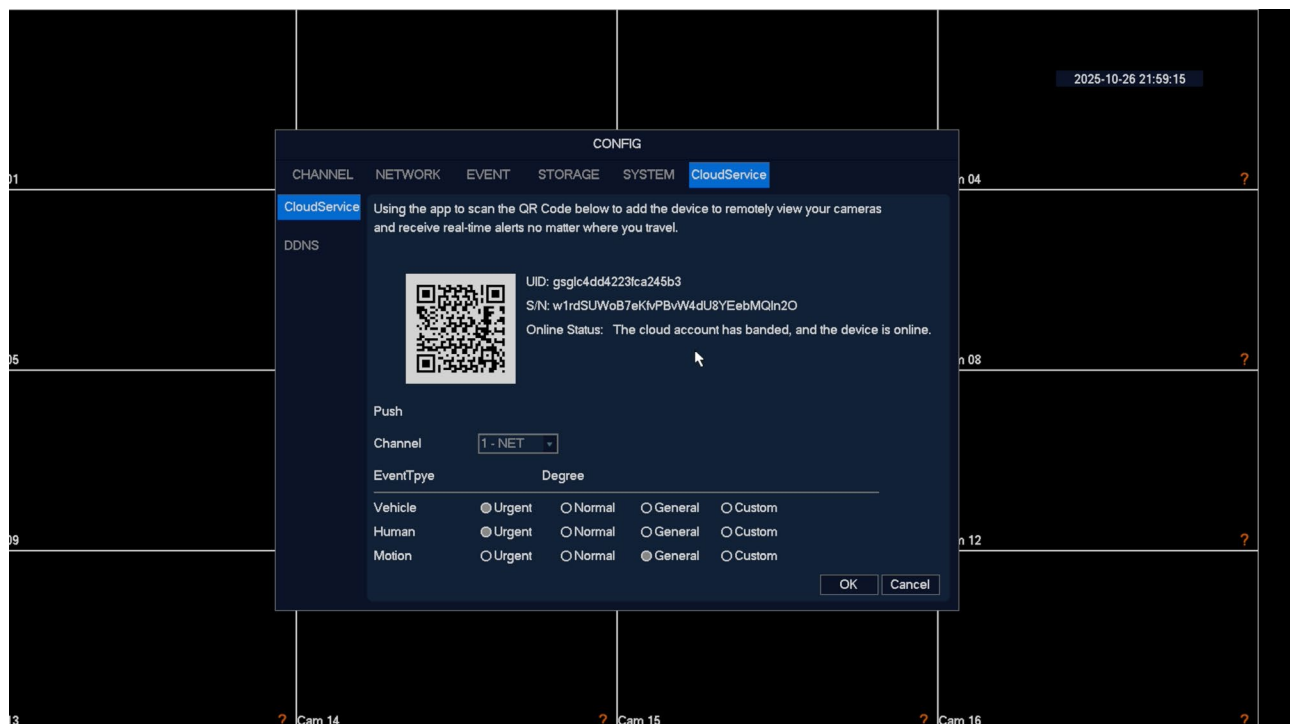
3 – GO TO THE P2P WINDOW TO CHECK THE CONNECTION TO THE SERVER

After checking the IP address of your NVR, still in the NETWORK section, open the CloudService folder to check the connection status to the Smartlife app

On this page you need to check the “Online status” item which, in a new device, must be appear as shown in the figure. This means that the device has not yet been connected to no account in the Smartlife Tuya app, which we will address later in the manual.



Conversely, an NVR already connected to an app account looks like this



You will first need to delete it from the account it is linked to in order to associate it with a new one.
account in the app.

Connect cameras to NVR

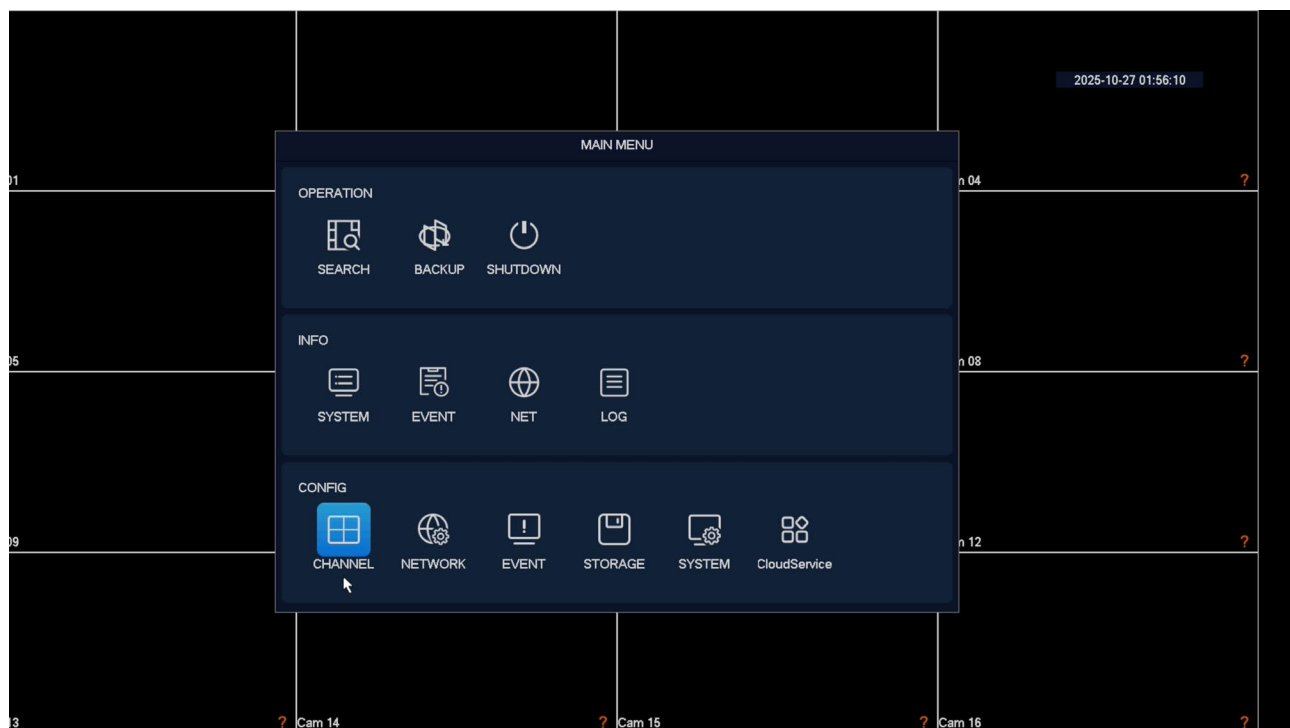
This NVR is made to manage Onvif IP cameras connected to your router network via switch or wifi.

Before adding an IP camera you must have configured it on the network, using the appropriate configuration software, as explained in the camera manual. If it is a camera based on Tuya protocol, like our DM Series home automation cameras, after

Once you have connected them to your wifi network using the Tuya app, you will need to enable the Onvif protocol in the configuration.

To add a network IP camera to your NVR, follow these instructions.

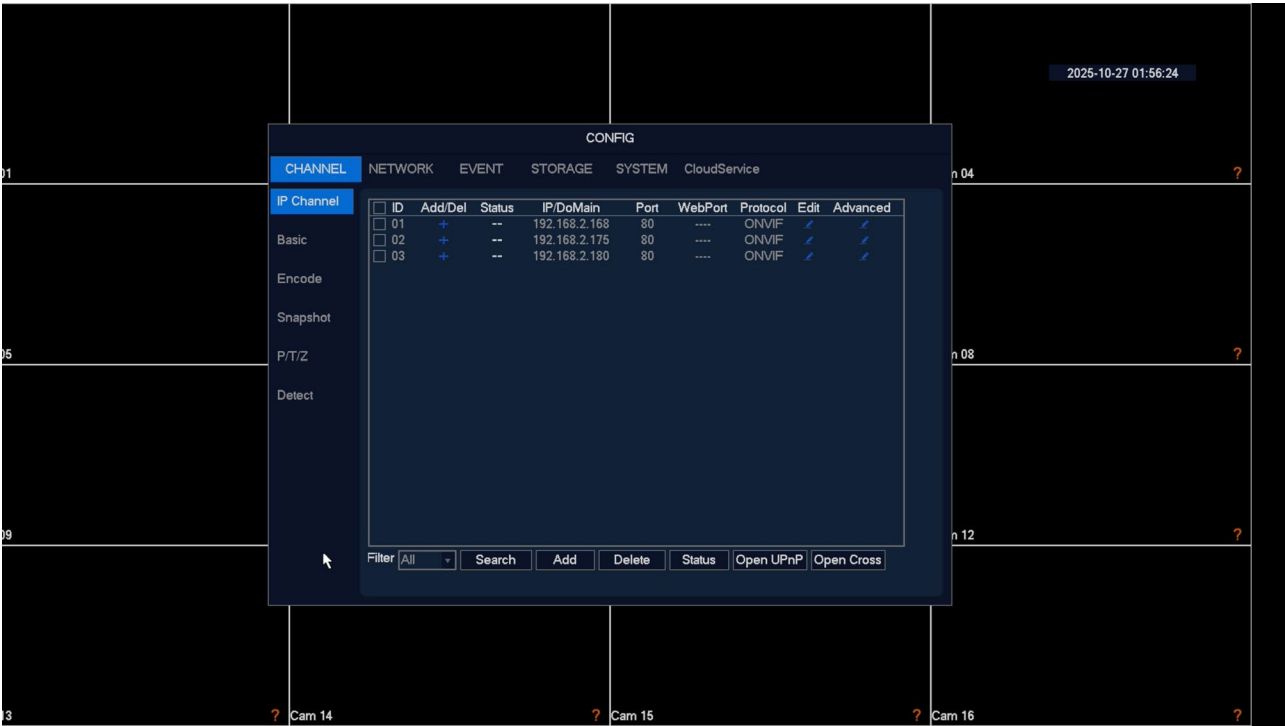
1 – ENTER CHANNEL MANAGEMENT



2 – SEARCH FOR CAMERAS ON THE NET

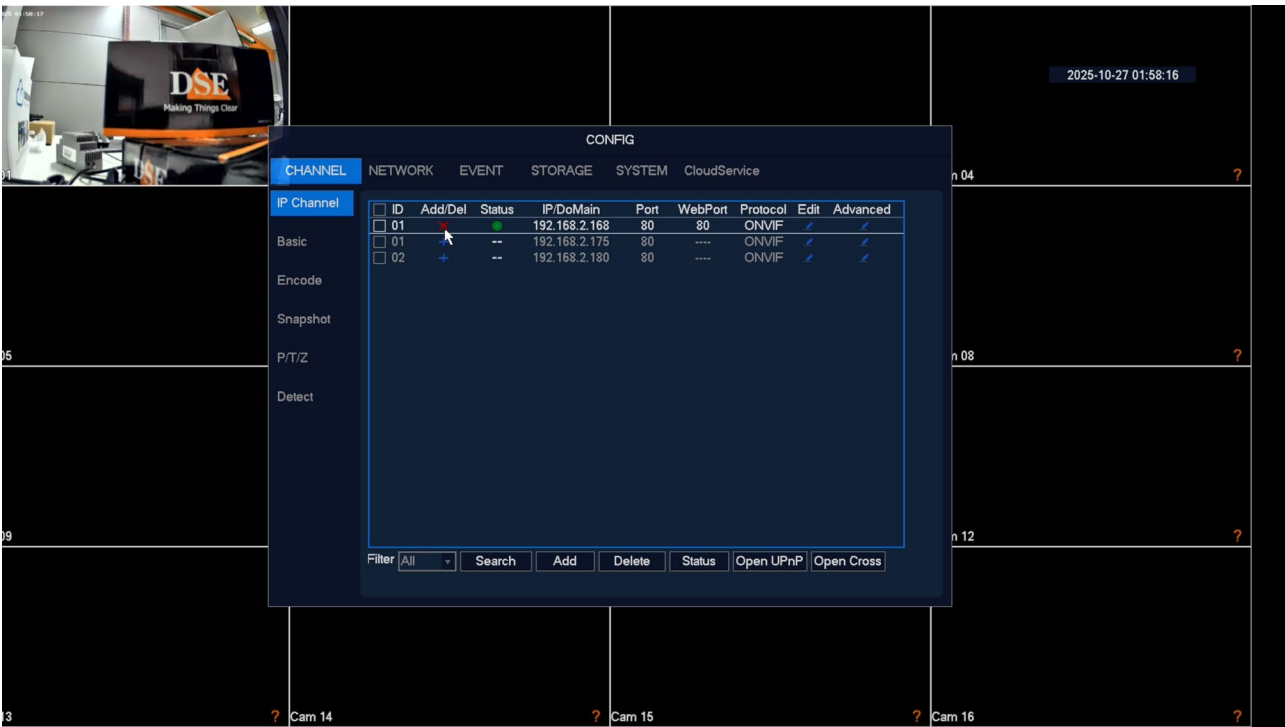
Normally the NVR searches for cameras on the network automatically, immediately after the first boot, so you should find this window already populated with detected devices.

In this case you can manually start the search with the SEARCH button. In this example the NVR has detected 3 Onvif cameras connected to the network-



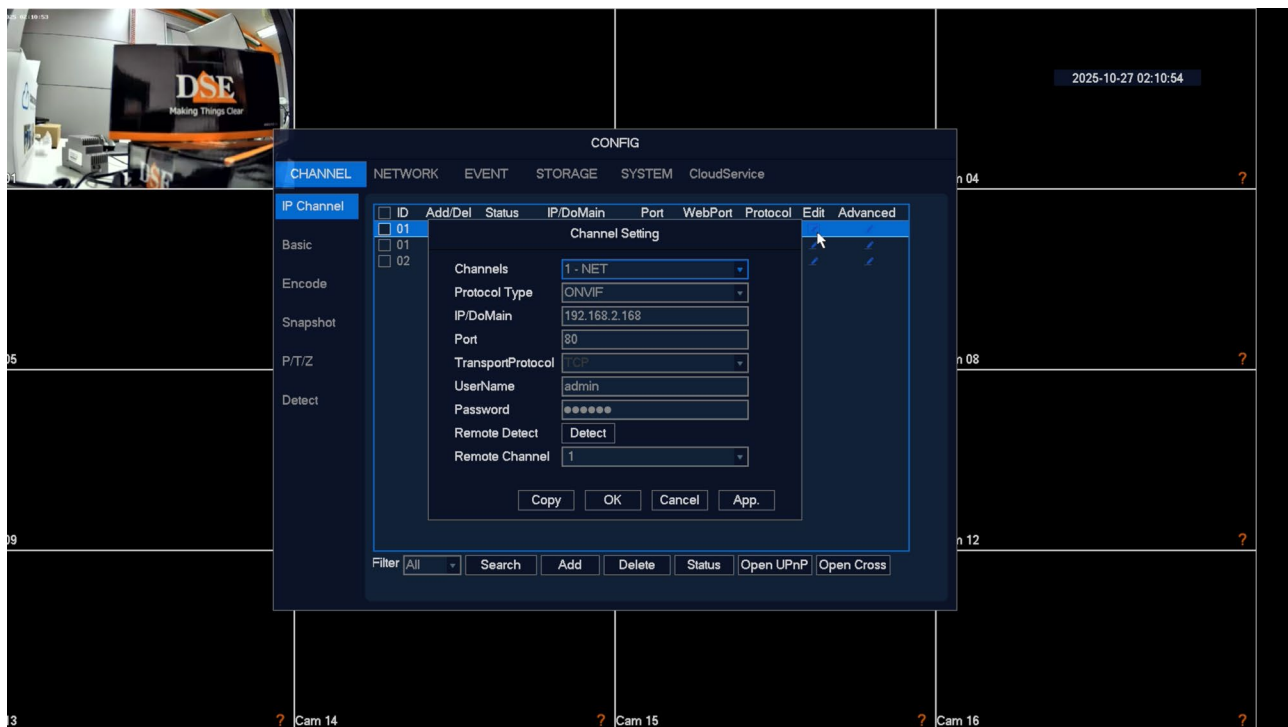
3 – ADD THE CAMERA

Select the camera you want to assign to channel 1 and press the + icon to add it to the NVR.



4 – CHECK YOUR CAMERA SETTINGS

Normally, the NVR is able to receive the data needed to perform the monitoring from the camera. connection, so the green status icon and the image on the screen may already appear immediately. screen. However, the connection may not be successful at the first attempt, because Some parameters, such as the access password, must be entered manually. Then press the edit icon to the right of the camera. In the window you can mainly edit the access password, which protects your cameras, and possibly the security door communication, if your camera uses a particular onvif port.



5 – DONE. PROCEED IN THE SAME WAY FOR THE OTHER CAMERAS.

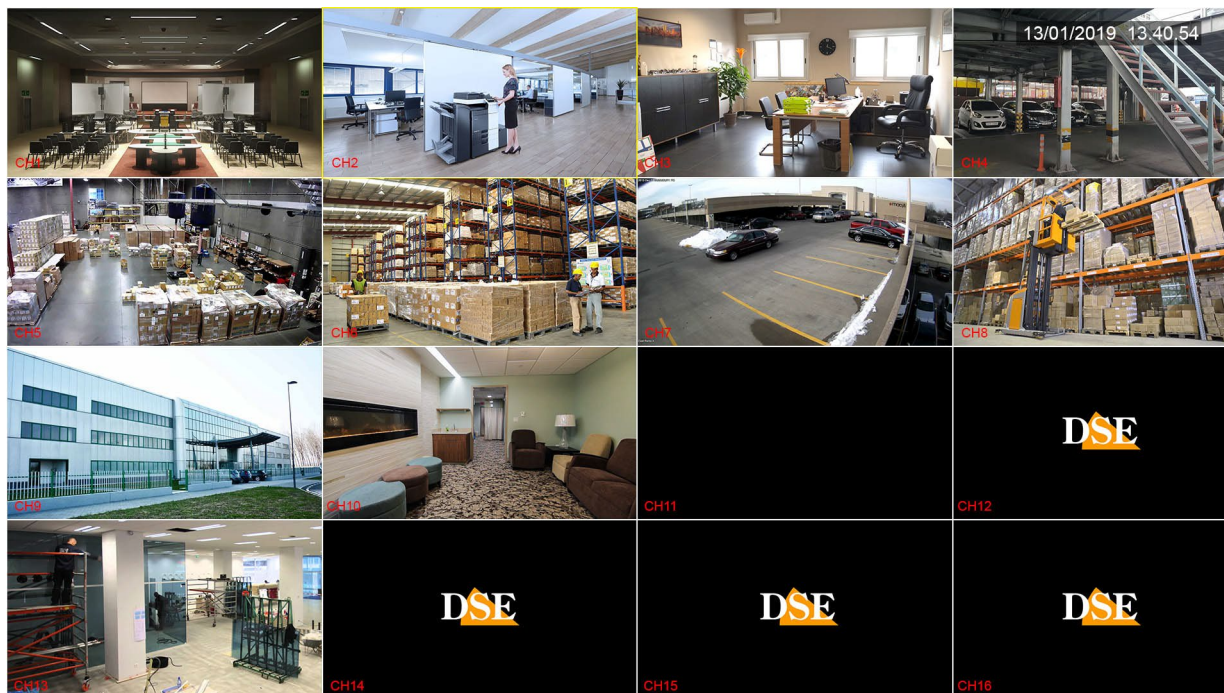
Add all the cameras to the various channels of the NVR one by one.

If a camera does not connect even after checking the password and port, enter the camera setup with browser and check that both main stream and substream have the same H264 or H265 compression and try using a different resolution.

Viewing live cameras

Now that you have installed your video recorder you can see the cameras on the monitor. In this

In this chapter, we'll give you some tips to help you get the most out of live viewing.



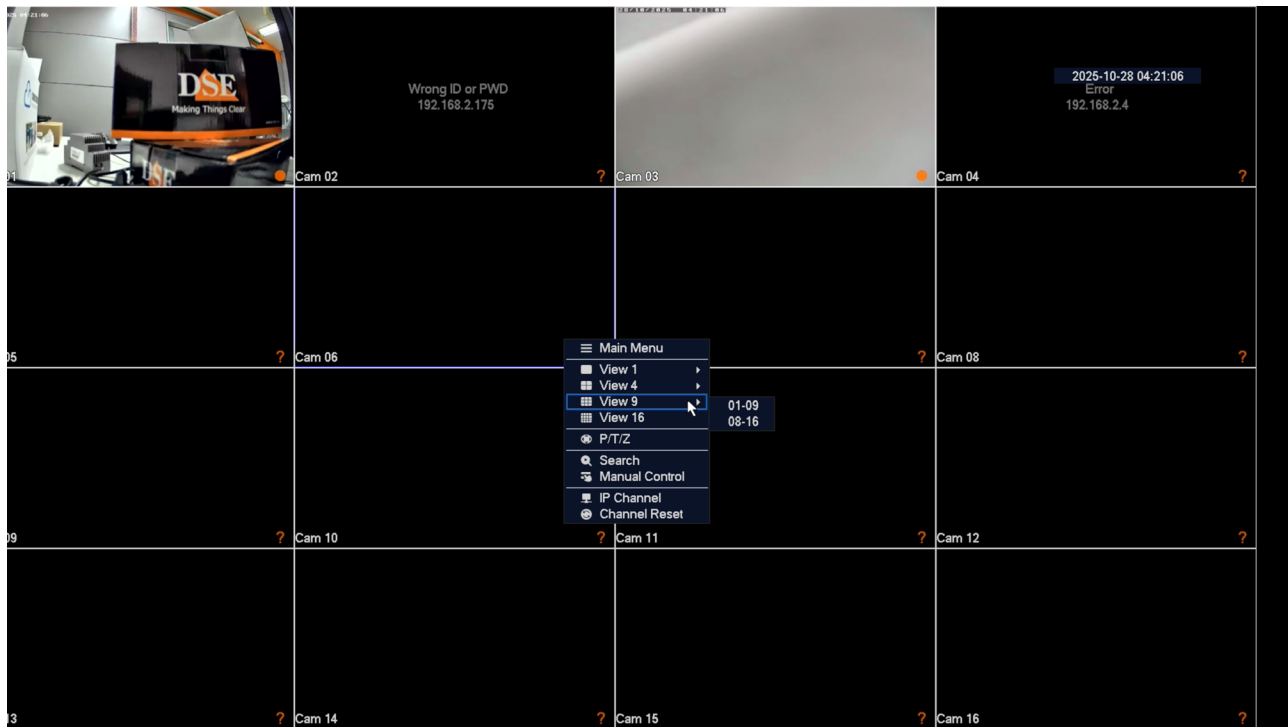
The factory display provides full-screen multi-view of all cameras. You can

Easily change this basic view.

You can bring a camera to full screen by double-clicking and return by right-clicking.

RIGHT CLICK MENU

In live view, you can right-click to show the context menu.



MAIN MENU – Click to open the configuration menu

VIEW 1-16 – Changes the division of the screen into a different number of quadrants. These are different divisions available depending on the device.

PTZ – Opens motion control for motorized cameras

SEARCH – Opens the playback page directly

IP CHANNELS – Directly opens the channels configuration page to add cameras

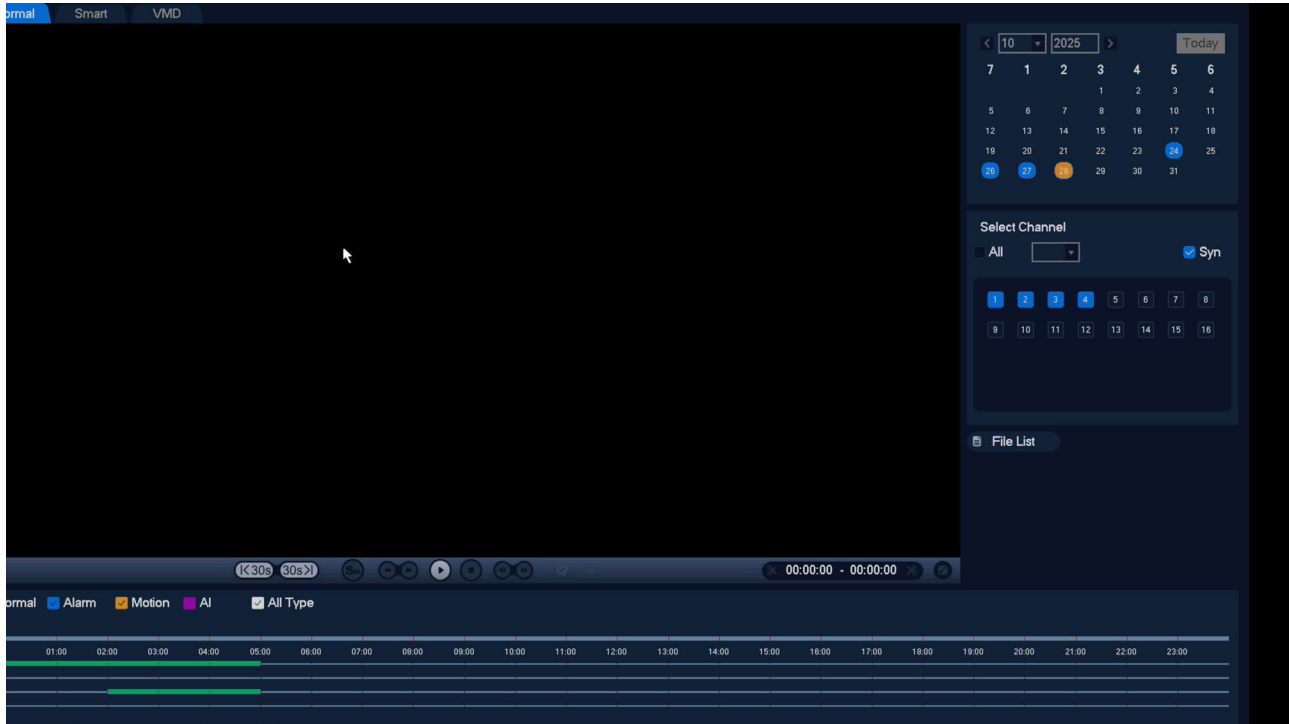
CHANNEL RESET – Clears channel settings

Review the recordings

To review archived recordings from your NVR/DVR, perform the following steps.

1 – OPEN THE PLAYBACK WINDOW

Right-click, then Search. Or open the Search icon menu.



2 - CHOOSE THE DAY AND CAMERA YOU WANT TO REVIEW

Select the day you want to review from the calendar on the right. The days that contain Recordings are highlighted. Click on one of them. Under the calendar, select the channels you want you want to play. The recordings will automatically appear in the timeline below. represents the 24 hours of the day

3 - PLAY THE MOMENT YOU WANT TO WATCH AGAIN

In the timeline at the bottom you can find the 24 hours of the day. The recordings are displayed with different colors depending on the type of recording.

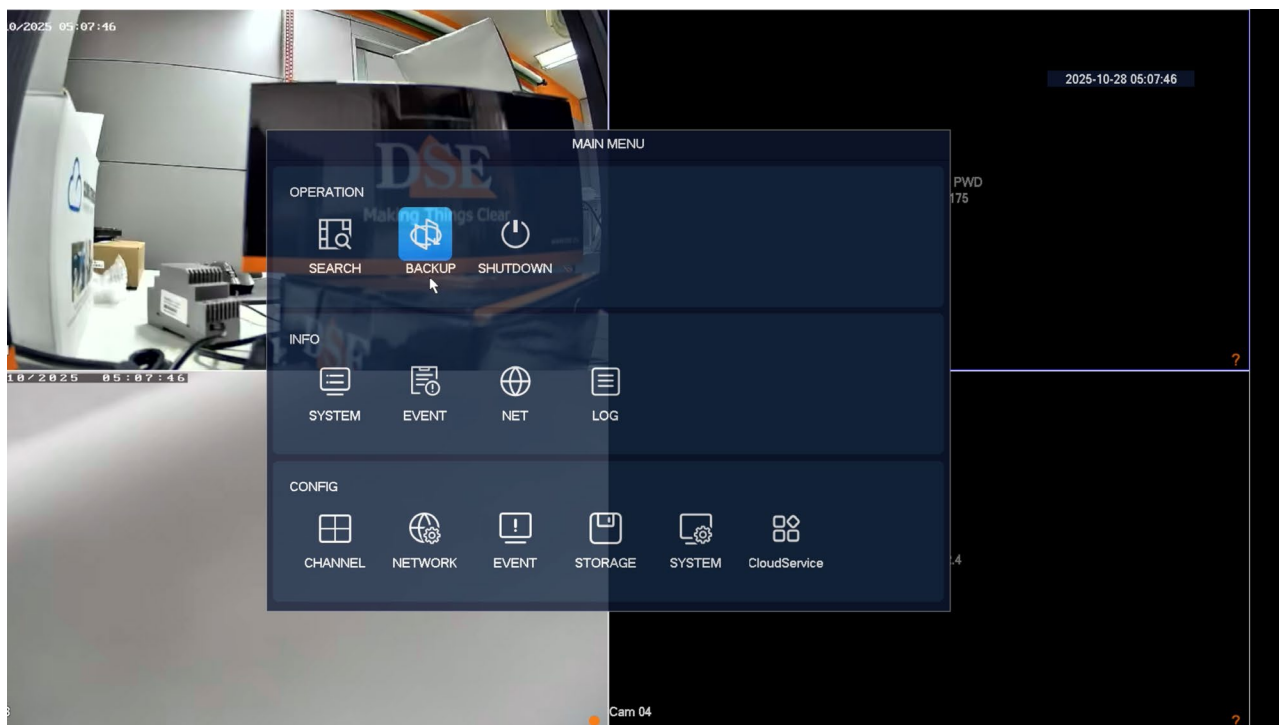
Backup files

You can search for recorded video files and export them to external storage devices. To be able to perform the backup insert a USB stick into a USB port on the NVR.

Do the following.

1 – OPEN THE BACKUP MENU

Click the backup icon in the menu



2 – SEARCH FOR FILES

You can search for files by date/time, channel, and event type. Select the files to export.

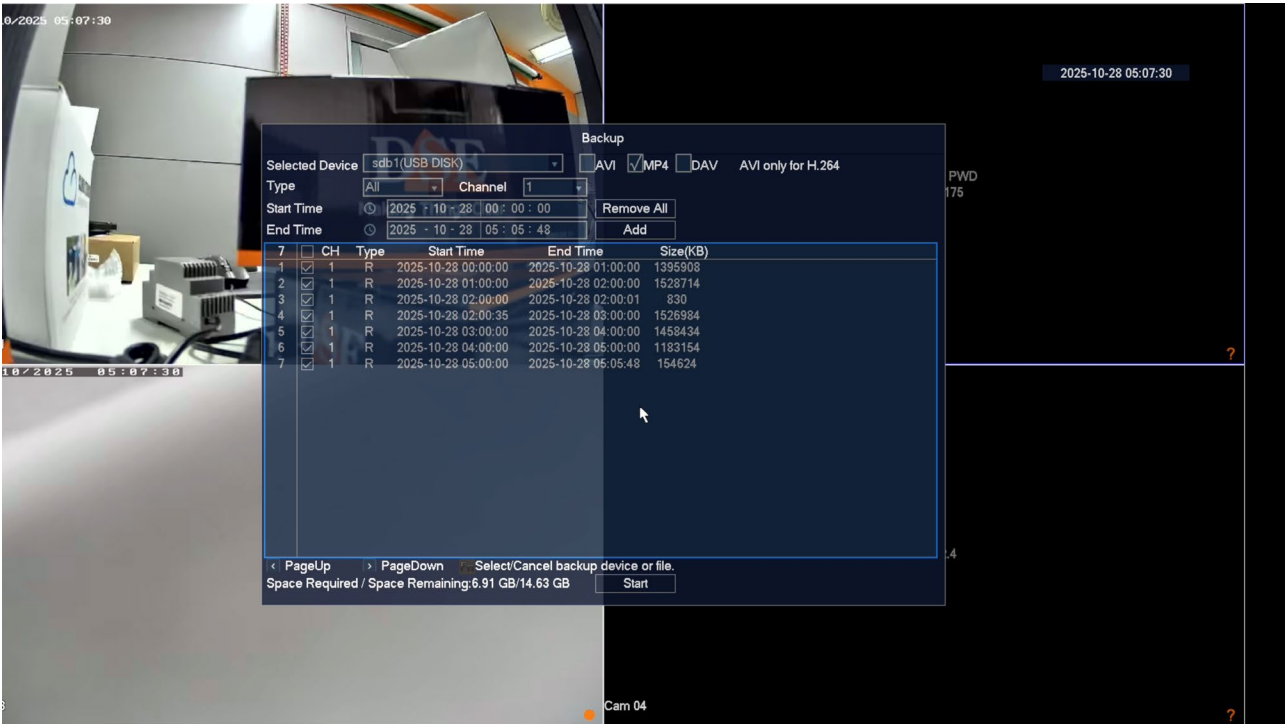
and start the backup with the START button

INSTALLATION MANUAL

DM SERIES – NVR Tuya



Page:24





Download the Smart Life app

To use the NVR with your mobile phone, you must first connect the device to your network. We have previously seen how to check the network status of your NVR, to verify that it is ready to be paired with the app.

First you need the APP **Smartlife** which you can download for free from Google Play or Apple Store. It's a very popular home automation app that uses the Tuya platform.



Powered by



When you first start, you must create an account by entering a valid email address. You may already have one. have an account in this app, perhaps if you have used another of our home automation products, such as a video intercom or a remote control.

If you don't have an account, press **CREATE A NEW ACCOUNT** and then wait for the code via email to confirm your registration.

If you don't have an email address you can also use your phone number by pressing **Use Phone Number** and get the verification code via SMS

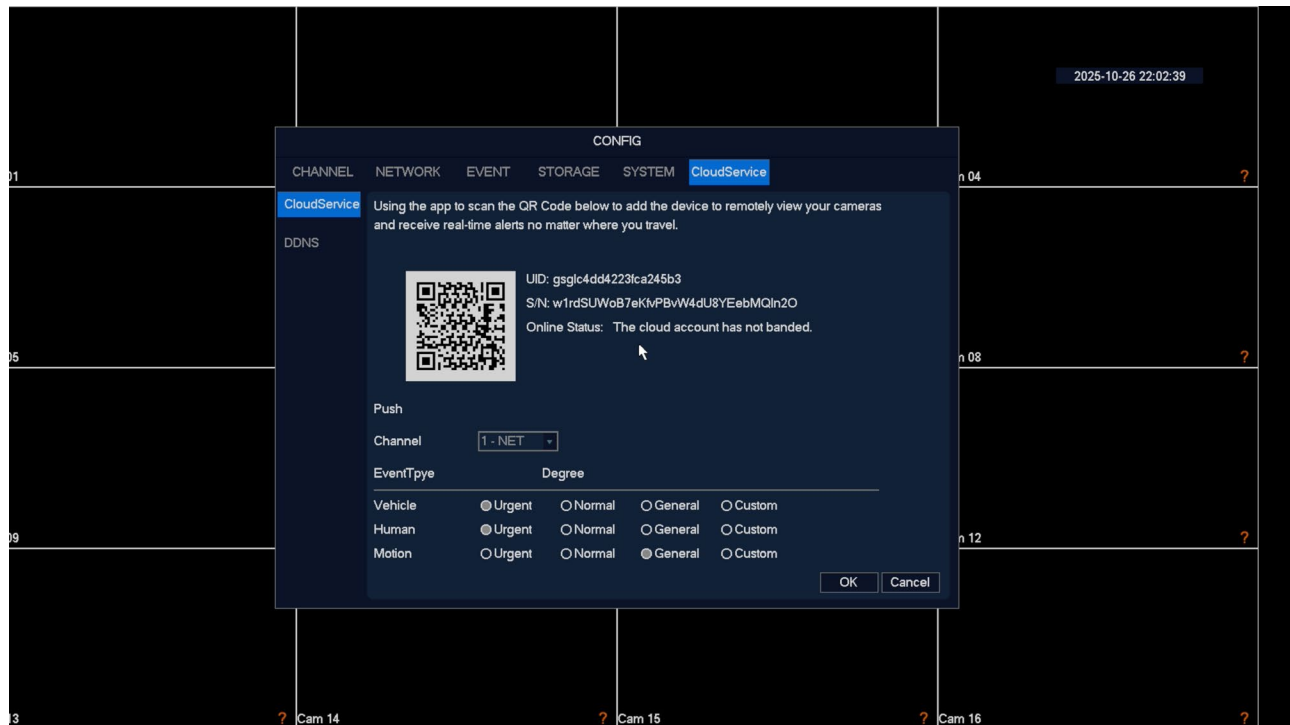
Once you have created your account you will have your own space in the cloud where you can upload all your photos. your cameras and also many different devices, such as our WiFi remote controls or our WiFi video intercoms of this series.

Load the device into the app

You can upload your camera to the app by following these instructions:

PRELIMINARY OPERATIONS

Connect your phone to the same network as the NVR. Then open the **CloudService** tab. in the menu



1 – LAUNCH THE APP AND SCAN THE QR CODE

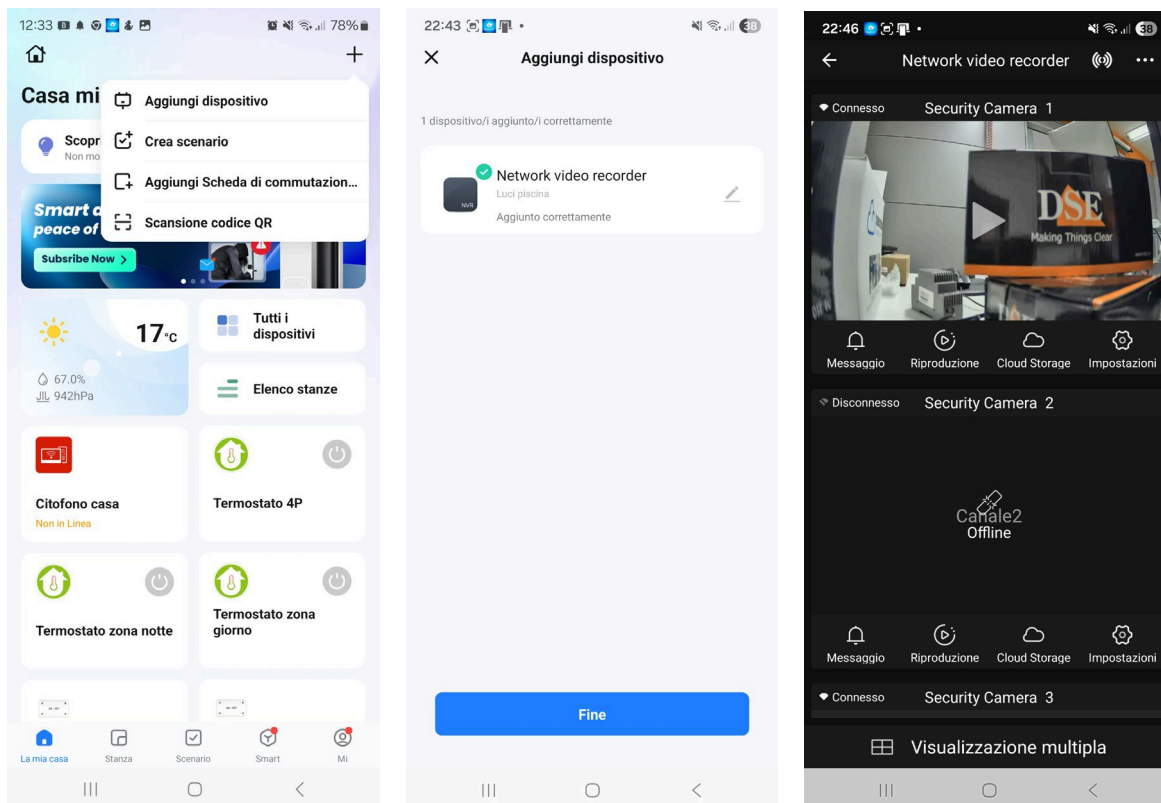
Tap the + in the top right and select SCAN QR CODE. Scan the QR code you see. on the screen on the Cloud Service page and wait for the procedure to complete automatic.

INSTALLATION MANUAL

DM SERIES – NVR Tuya



Page:27



2 – FINISHED

Your NVR is already online in the app

INSTALLATION MANUAL

DM SERIES – NVR Tuya



Page:28
